

1A Old Haymarket 73-89 Victoria Street, Liverpool, L1 6AF
Tel: 0151 305 2577
Email: liverpoolsales@ascendproperties.com
www.ascendproperties.com

Ascend

Built on higher standards



West Africa House, 25 Water Street, Liverpool

£975 PCM

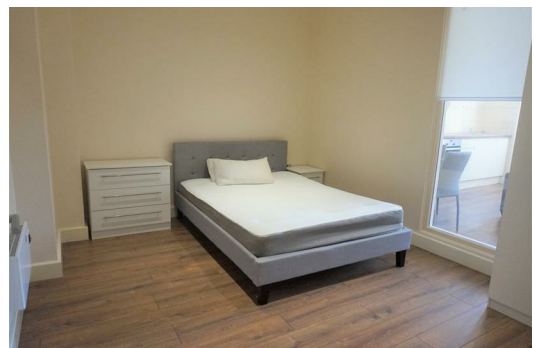
Step inside West Africa House. This iconic and fully renovated 1920s building is perfectly placed within a famous World Heritage site, opposite the renowned Three Graces and Royal Liver building. Offering a bespoke collection of high-spec 1 and 2-bedroom apartments, this development needs to be seen to be fully appreciated.

With a Manhattan-loft style interior creating bags of style and sophistication, this spacious and fully-furnished apartment also comes complete with wooden floors and huge windows giving you some cracking views out across the city. The modern kitchen is a dream - with slick, white cabinets and an integrated hob/oven. You'll also benefit from a stylish, contemporary bathroom.

Smack bang in the city centre, you'll not be short of amenities right on your doorstep, with several bars, restaurants and shopping outlets just a stone's throw away. James Street train station is just a 3 minute walk - so commuting around the city and beyond couldn't be easier. Your apartment is also just 150 meters away from the main shopping, residential and leisure district complex, Liverpool ONE.

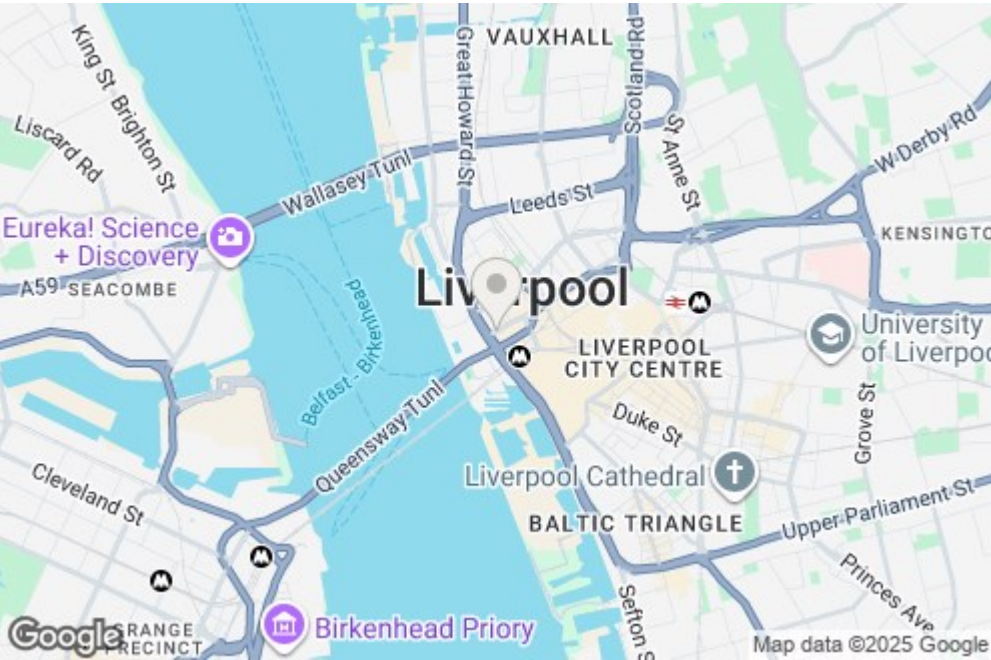
We guarantee this stunning property won't be on the market for long, so make sure to give our team a call sooner rather than later. And just so you know, the images are for marketing purposes only, so the fixtures and fittings may vary.

Available NOW
Deposit - £1,120
Furnished
12 Months



501 West Africa 25 Water Street, Liverpool, Merseyside, L2 0RG

- Kitchen
- Living Room
- Bedroom 1
- Bedroom 2
- Bathroom
- West Africa House



Energy Efficiency Rating			Environmental Impact (CO ₂) Rating		
Very energy efficient - lower running costs	Current	Potential	Very environmentally friendly - lower CO ₂ emissions	Current	Potential
A (92-100)	80	84	A (2-10)	76	78
B (81-91)			B (11-20)		
C (69-80)			C (21-30)		
D (55-68)			D (31-40)		
E (39-54)			E (41-50)		
F (29-38)			F (51-60)		
G (1-28)			G (61-70)		
Not energy efficient - higher running costs			Not environmentally friendly - higher CO ₂ emissions		